

1

2

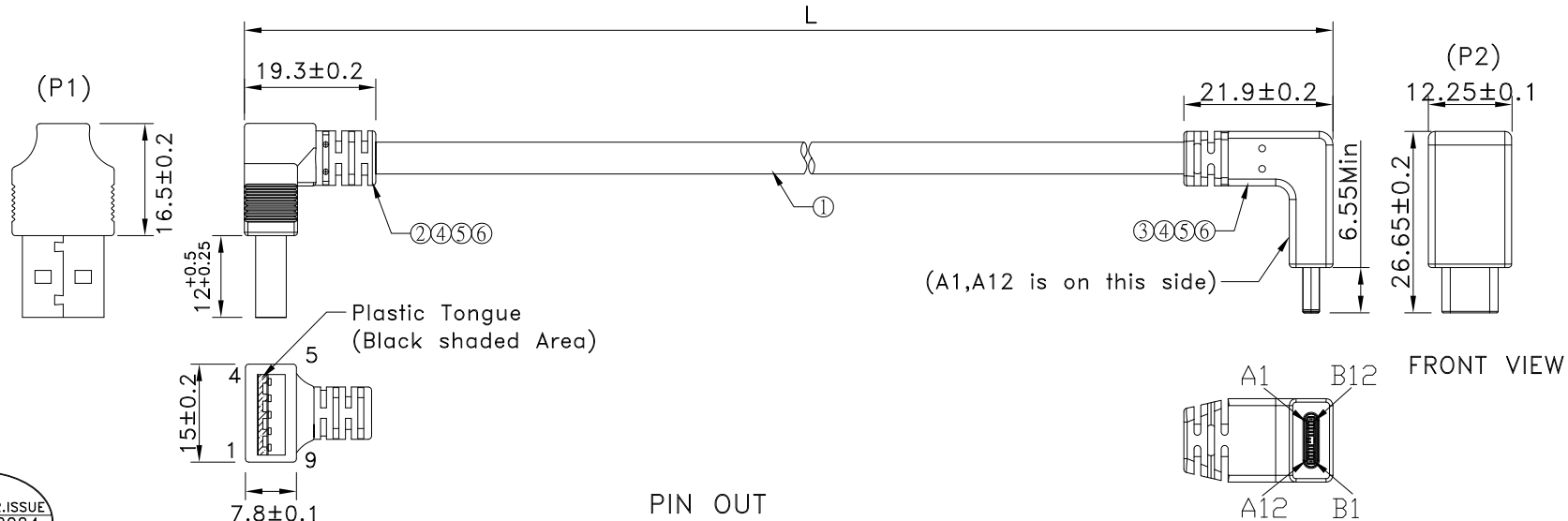
3

4

Note:

1.Type C -Pin out is the same as this drawing.

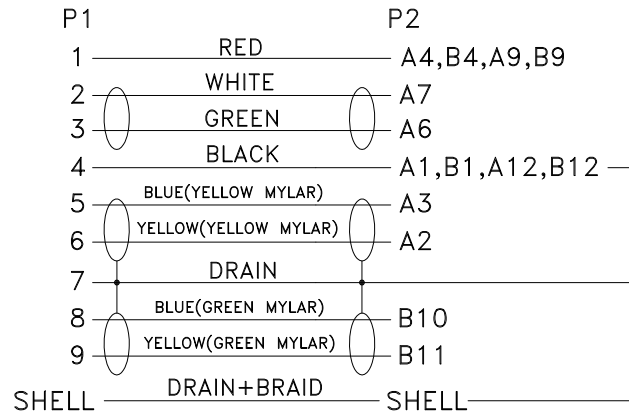
REV	ECN#	DESCRIPTION OF REVISION	DRAW BY DATE	CHECK BY DATE	APPROVE BY DATE
A0			Lucas 06/24/24	Lucas 06/24/24	Ray 06/24/24



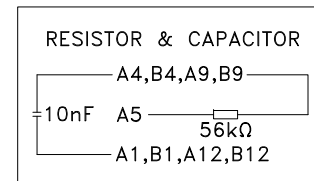
GTC
DOC.CENTER.ISSUE
JUN.22.2024
ONLY FOR
RELEASE

USB3.0 A MALE
RIGHT ANGLE UP
MOLDED BLACK

PIN OUT




USB TYPE C M
RIGHT ANGLE UP/DOWN
MOLDED BLACK



P/N	LENGTH
RR-AUCV-05GRCX	127 ⁺²⁰ ₋₀
RR-AUCV-10GRCX	255 ⁺²⁰ ₋₀
RR-AUCV-15GRCX	381 ⁺³⁰ ₋₀
RR-AUCV-25GRCX	635 ⁺³⁰ ₋₀
RR-AUCV-40GRCX	1016 ⁺⁴⁰ ₋₀

TITLE					DRAWING NUMBER			REV.
USB3.0 AM RIGHT ANGLE UP TO USB3.1 C TYPE MALE RIGHT ANGLE UP/DOWN					RR-AUCV-XXGRCX			A0
THIRD ANGLE PROJECTION	SIZE	SCALE	DRAW / DATE	CHECK / DATE	APPROVE / DATE	TOLERANCES	UNIT	SHEET
THIRD ANGLE PROJECTION	B	1:1	Lucas 06/24/24	Lucas 06/24/24	Ray 06/24/24	X.X ± 0.5 X.XX ± 0.2	mm	1/3
						X.XXX ± 0.05 ANGLES ± 1°		


USBFIREWIRE.com

THE INFORMATION CONTAINED HEREIN IS PROPRIETARY AND CONFIDENTIAL TO RR BUSINESS VENTURES, LLC. THE POSSESSOR AGREES TO THE FOLLOWING

1. MAINTAIN THIS DOCUMENT IN CONFIDENCE
2. NOT TO REPRODUCE OR COPY IT
3. NOT TO REVEAL OR PUBLISH IT IN WHOLE OR PART

1

2

3

4

1

2

3

4

REV	ECN#	DESCRIPTION OF REVISION	DRAW BY DATE	CHECK BY DATE	APPROVE BY DATE
A0			Lucas 06/24/24	Lucas 06/24/24	Ray 06/24/24

D

D

C

C

B

B

A

A

ITEM	Part name	MATERIAL/FINISH	Q,ty
1	Cable	UL2725 (1P/32#+EAM)*2+(1P/32#)+(2C/28#)+AEB 65% OD:4.2mm BLACK PVC JACKET	1
2	USB 3.0 AM	USB3.0 A TYPE 9PIN MALE SOLDER TYPE	1
		PINS: 30u GOLD PLATED OVER NICKEL	
		INSULATOR: BLUE COLOR P.B.T UL 94V-0 RATED	
		SHELL: STEEL WITH GOLD FLASH	
3	USB Type CM	USB TYPE C MALE SOLDER TYPE,RESISTOR(56K Ω) AND CAPACITOR(10nF 30V)	1
		PINS: 30u GOLD PLATED OVER NICKEL	
		INSULATOR: BLACK COLOR P.B.T UL 94V-0 RATED	
		SHELL: STEEL WITH GOLD FLASH	
4	inner Mold	HENKEL: A2035 94A	
5	Over Mold	BLACK PVC 45P	
6	Copper foil	Copper foil	



TITLE USB3.0 AM RIGHT ANGLE UP TO USB3.1 C TYPE MALE RIGHT ANGLE UP/DOWN					DRAWING NUMBER RR-AUCV-XXGRCX			REV. A0	
	B	1:1	Lucas 06/24/24	Lucas 06/24/24	Ray 06/24/24	X.X ± 0.5 X.XX ± 0.2	X.XXX ± 0.05 ANGLES ± 1°	mm	2/3
THIRD ANGLE PROJECTION	SIZE	SCALE	DRAW / DATE	CHECK / DATE	APPROVE / DATE	TOLERANCES		UNIT	SHEET

THE INFORMATION CONTAINED HEREIN IS PROPRIETARY AND CONFIDENTIAL TO RR BUSINESS VENTURES, LLC. THE POSSESSOR AGREES TO THE FOLLOWING

1. MAINTAIN THIS DOCUMENT IN CONFIDENCE
2. NOT TO REPRODUCE OR COPY IT
3. NOT TO REVEAL OR PUBLISH IT IN WHOLE OR PART

1

2

3

4

1

2

3

4

REV	ECN#	DESCRIPTION OF REVISION	DRAW BY DATE	CHECK BY DATE	APPROVE BY DATE
A0			Lucas 06/24/24	Lucas 06/24/24	Ray 06/24/24

P/N	LENGTH(mm)	PE BAG(Inch)	PACKAGE
RR-AUCV-05GRCX	127 ⁺²⁰ ₋₀	5.5"*10	(1)
RR-AUCV-10GRCX	255 ⁺²⁰ ₋₀	5.5"*10	(2)
RR-AUCV-15GRCX	381 ⁺³⁰ ₋₀	5.5"*10	(2)
RR-AUCV-25GRCX	635 ⁺³⁰ ₋₀	5.5"*10	(2)
RR-AUCV-40GRCX	1016 ⁺⁴⁰ ₋₀	5.5"*10	(2)

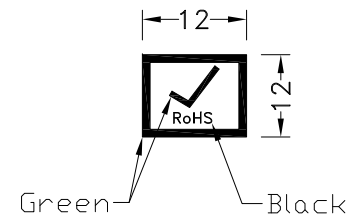
PE BAG LABEL

RR-AUCV-XXGRCX REV:XX
 LOT: XXXX
 Made in China

25

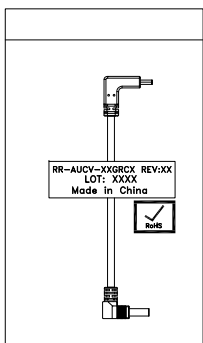
RR-AUCV-XXGRCX REV:XX QTY:25PCS
 LOT: XXXX
 Made in China

RoHS LABEL

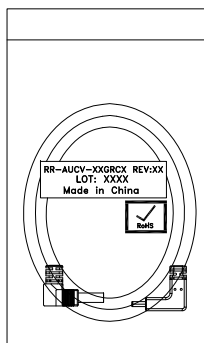


NOTES:PACK EACH CABLE IN A POLY BAG AND 25PCS IN A POLY BAG.

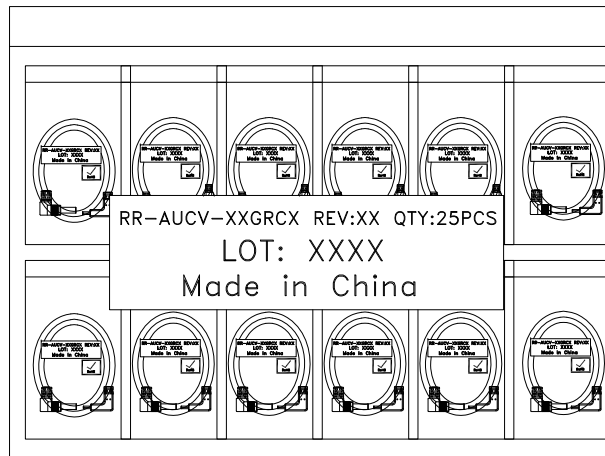
PACK(1)



PACK(2)



GTC
 DOC.CENTER.ISSUE
 JUN.22.2024
 ONLY FOR
 RELEASE



TITLE
 USB3.0 AM RIGHT ANGLE UP TO USB3.1 C TYPE MALE RIGHT ANGLE UP/DOWN

DRAWING NUMBER
 RR-AUCV-XXGRCX

REV.
 A0

THIRD ANGLE PROJECTION	SIZE	SCALE	DRAW / DATE	CHECK / DATE	APPROVE / DATE
	B	1:1	Lucas 06/24/24	Lucas 06/24/24	Ray 06/24/24

X.X X.XX	± 0.5 ± 0.2	X.XXX ANGLES	± 0.05 ± 1°	mm	3/3
TOLERANCES				UNIT	SHEET

THE INFORMATION CONTAINED HEREIN IS PROPRIETARY AND CONFIDENTIAL TO RR BUSINESS VENTURES, LLC. THE POSSESSOR AGREES TO THE FOLLOWING

1. MAINTAIN THIS DOCUMENT IN CONFIDENCE
2. NOT TO REPRODUCE OR COPY IT
3. NOT TO REVEAL OR PUBLISH IT IN WHOLE OR PART

1

2

3

4