

1

2

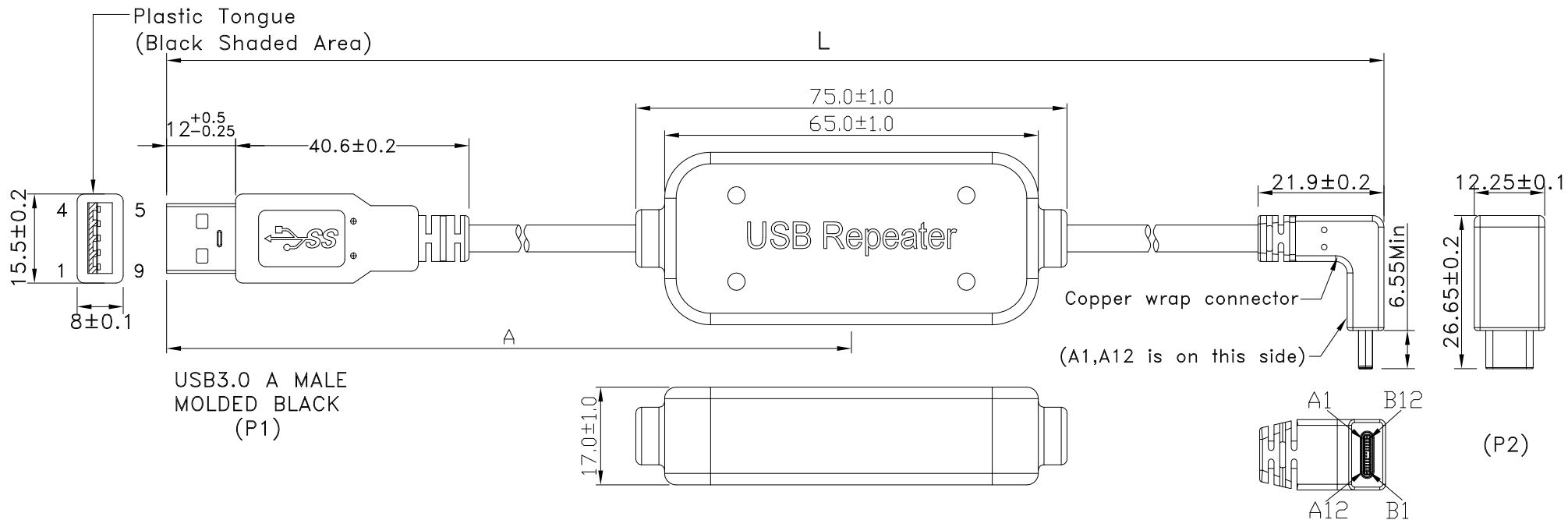
3

4

REV	ECN#	DESCRIPTION OF REVISION	DRAW BY DATE	CHECK BY DATE	APPROVE BY DATE
01			Lucas 03/16/22	Lucas 03/16/22	Ray 03/16/22

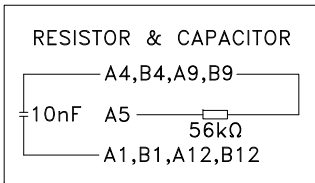
Note:

1.Type C -Pin out is the same as this drawing.



PIN OUT	
P1	P2
1 — RED	A4,B4,A9,B9
2 — WHITE	A7
3 — GREEN	A6
4 — BLACK	A1,B1,A12,B12
5 — BLUE(YELLOW MYLAR)	A3
6 — YELLOW(YELLOW MYLAR)	A2
7 — DRAIN	
8 — BLUE(GREEN MYLAR)	B10
9 — YELLOW(GREEN MYLAR)	B11
SHELL — DRAIN+BRAID	SHELL

USB3.1 C MALE  
RIGHT ANGLE UP/DOWN  
MOLDED BLACK



P/N	LENGTH	A
RR-ASCV-180GRC-R	4572±50	(2286)
RR-ASCV-270GRC-R	6858±80	(3429)
RR-ASCV-300GRC-R	7620±100	(3810)
RR-ASCV-360GRC-R	9144±100	(4572)

TITLE USB3.0 AM TO TYPE C MALE RIGHT ANGLE UP/DOWN WITH REPEATER					DRAWING NUMBER RR-ASCV-XXGRC-R			REV. 01	
THIRD ANGLE PROJECTION	SIZE B	SCALE 1:1	DRAW / DATE Lucas 03/16/22	CHECK / DATE Lucas 03/16/22	APPROVE / DATE Ray 03/16/22	TOLERANCES X.X ± 0.5 X.XX ± 0.2	ANGLES X.XXX ± 0.05 ± 1°	UNIT mm	SHEET 1/3

THE INFORMATION CONTAINED HEREIN IS PROPRIETARY AND CONFIDENTIAL TO RR BUSINESS VENTURES, LLC. THE POSSESSOR AGREES TO THE FOLLOWING

1. MAINTAIN THIS DOCUMENT IN CONFIDENCE
2. NOT TO REPRODUCE OR COPY IT
3. NOT TO REVEAL OR PUBLISH IT IN WHOLE OR PART

1

2

3

4

1

2

3

4

REV	ECN#	DESCRIPTION OF REVISION	DRAW BY DATE	CHECK BY DATE	APPROVE BY DATE
01			Lucas 03/16/22	Lucas 03/16/22	Ray 03/16/22

\*\*\*CONSTRUCTION:

1.CABLE: \* UL2725 (1P/30#+EAM)\*2+(1P/30#)+(2C/24#)+AEB(AL)65% OD:5.0mm  
BLACK PVC JACKET.

\*\*\*CONNECTOR:

2.USB A/M: \* USB A "3.0" TYPE 9PIN MALE SOLDER TYPE.  
\* PINS: 30u GOLD PLATED OVER NICKEL.  
\* INSULATOR: BLUE COLOR P.B.T UL 94V-0 RATED.  
\* SHELL: STEEL WITH GOLD FLASH .  
\* MOLDED: BLACK PVC 45P.

3.USB C/M: \* USB TYPE C MALE SOLDER TYPE.  
\* PINS: 30u GOLD PLATED OVER NICKEL.  
\* INSULATOR: BLACK THERMOPLASTIC UL 94V-0.  
\* SHELL: STEEL WITH GOLD FLASH.  
\* RESISTOR(56KΩ) AND CAPACITOR.  
\* MOLDED: BLACK PVC 45P & 30P.

4.REPEATER: \* MOLDED: BLACK PVC 45P.

5.TEST: \* CT: 2 ohm IS: 5M ohm DC300V 0.1S

6.PACKING: \* PACK EACH CABLE IN A POLY BAG AND 25PCS IN A POLY BAG.

7.MATERIAL: \* MATERIAL WITH RoHS GRADE.



TITLE USB3.0 AM TO TYPE C MALE RIGHT ANGLE UP/DOWN WITH REPEATER					DRAWING NUMBER RR-ASCV-XXGRC-R			REV. 01
---	--	--	--	--	-----------------------------------	--	--	------------

	B	1:1	Lucas 03/16/22	Lucas 03/16/22	Ray 03/16/22	X.X ± 0.5 X.XX ± 0.2	X.XXX ± 0.05 ANGLES ± 1°	mm	2/3
THIRD ANGLE PROJECTION	SIZE	SCALE	DRAW / DATE	CHECK / DATE	APPROVE / DATE	TOLERANCES		UNIT	SHEET

THE INFORMATION CONTAINED HEREIN IS PROPRIETARY AND CONFIDENTIAL TO RR BUSINESS VENTURES, LLC. THE POSSESSOR AGREES TO THE FOLLOWING

1. MAINTAIN THIS DOCUMENT IN CONFIDENCE
2. NOT TO REPRODUCE OR COPY IT
3. NOT TO REVEAL OR PUBLISH IT IN WHOLE OR PART

1

2

3

4

1

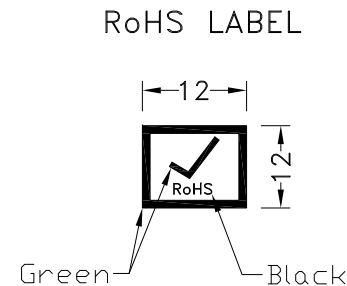
2

3

4

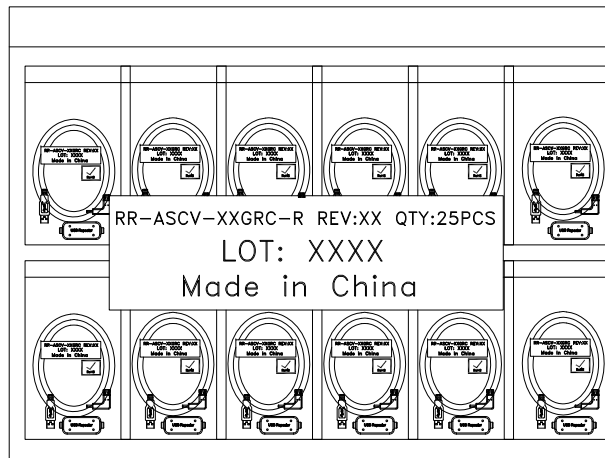
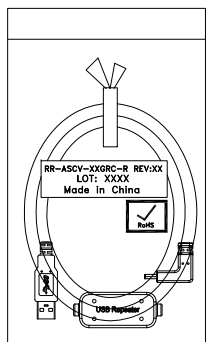
REV	ECN#	DESCRIPTION OF REVISION	DRAW BY DATE	CHECK BY DATE	APPROVE BY DATE
01			Lucas 03/16/22	Lucas 03/16/22	Ray 03/16/22

P/N	LENGTH(mm)	PE BAG(Inch)	PACKAGE
RR-ASCV-180GRC-R	4572±50	7"*10"	(1)
RR-ASCV-270GRC-R	6858±80	10"*10"	(1)
RR-ASCV-300GRC-R	7620±100	10"*10"	(1)
RR-ASCV-360GRC-R	9144±100	10"*10"	(1)



NOTES:PACK EACH CABLE IN A POLY BAG AND 25PCS IN A POLY BAG.

PACK(1)



GTC  
DOC.CENTER.ISSUE  
MAR.16.2022  
ONLY FOR  
RELEASE

TITLE  
USB3.0 AM TO TYPE C MALE RIGHT ANGLE UP/DOWN WITH REPEATER

DRAWING NUMBER  
RR-ASCV-XXGRC-R

REV.  
01

THIRD ANGLE PROJECTION	SIZE	SCALE	DRAW / DATE	CHECK / DATE	APPROVE / DATE	TOLERANCES	UNIT	SHEET
DD NOT SCALE DRAWINGS	B	1:1	Lucas 03/16/22	Lucas 03/16/22	Ray 03/16/22	X.X ± 0.5 X.XX ± 0.2	mm	3/3
						X.XXX ± 0.05 ANGLES ± 1°		

USB FIREWIRE.com

THE INFORMATION CONTAINED HEREIN IS PROPRIETARY AND CONFIDENTIAL TO RR BUSINESS VENTURES, LLC. THE POSSESSOR AGREES TO THE FOLLOWING

1. MAINTAIN THIS DOCUMENT IN CONFIDENCE
2. NOT TO REPRODUCE OR COPY IT
3. NOT TO REVEAL OR PUBLISH IT IN WHOLE OR PART

1

2

3

4