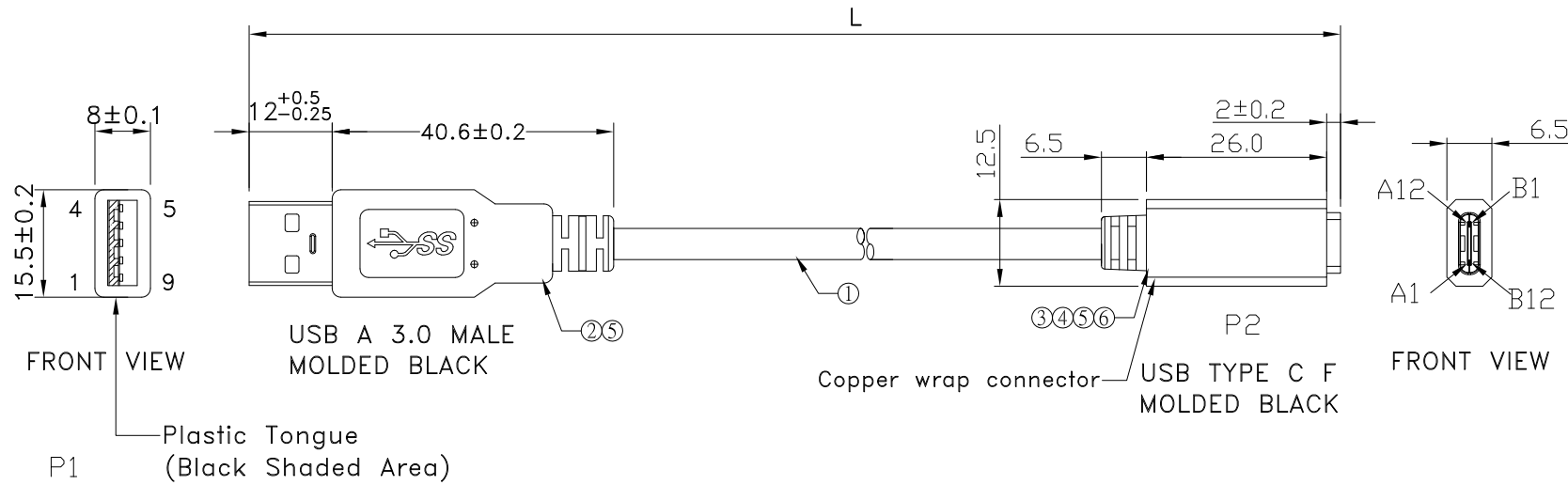


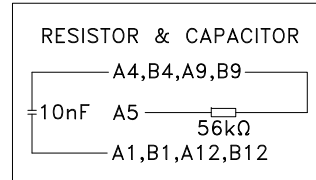
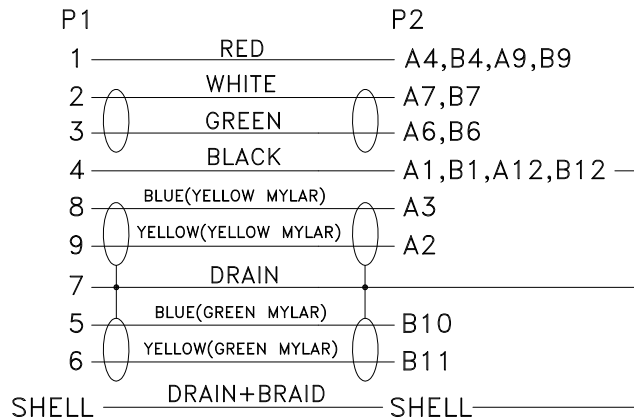
Note:

1.Type C -Pin out is the same as this drawing.

REV	ECN#	DESCRIPTION OF REVISION	DRAW BY DATE	CHECK BY DATE	APPROVE BY DATE
A3	ECN-231106	RR-ASCF-XXG=>RR-ASCF-XXGRC	Lucas 11/15/23	Lucas 11/15/23	Ray 11/15/23



PIN OUT



P/N	LENGTH
RR-ASCF-05GRC	127 ⁺²⁰ ₋₀
RR-ASCF-06GRC	153 ⁺²⁰ ₋₀
RR-ASCF-10GRC	255 ⁺²⁰ ₋₀
RR-ASCF-15GRC	381 ⁺³⁰ ₋₀
RR-ASCF-25GRC	635 ⁺³⁰ ₋₀
RR-ASCF-40GRC	1016 ⁺⁴⁰ ₋₀

TITLE						DRAWING NUMBER			REV.
USB 3.0 A MALE STRAIGHT ANGLE TO USB TYPE C FEMALE STRAIGHT ANGLE						RR-ASCF-XXGRC			A3
DD NOT SCALE DRAWINGS	B	1:1	Lucas 11/11/16	Ray 11/11/16	Ray 11/11/16	X.X ± 0.5 X.XX ± 0.2	X.XXX ± 0.05 ANGLES ± 1°	mm	1/3
THIRD ANGLE PROJECTION	SIZE	SCALE	DRAW / DATE	CHECK / DATE	APPROVE / DATE	TOLERANCES		UNIT	SHEET

THE INFORMATION CONTAINED HEREIN IS PROPRIETARY AND CONFIDENTIAL TO RR BUSINESS VENTURES, LLC. THE POSSESSOR AGREES TO THE FOLLOWING

1. MAINTAIN THIS DOCUMENT IN CONFIDENCE
2. NOT TO REPRODUCE OR COPY IT
3. NOT TO REVEAL OR PUBLISH IT IN WHOLE OR PART


1

2

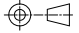
3


4

REV	ECN#	DESCRIPTION OF REVISION	DRAW BY DATE	CHECK BY DATE	APPROVE BY DATE
A3	ECN-231106	RR-ASCF-XXG=>RR-ASCF-XXGRC	Lucas 11/15/23	Lucas 11/15/23	Ray 11/15/23

ITEM	Part name	MATERIAL/FINISH	Q.ty
1	Cable	UL2725 (1P/30#+EAM)*2+(1P/30#)+(2C/24#)+AEB(AL)65% OD:5.0mm BLACK PVC JACKET	1
2	USB 3.0 AM	USB3.0 A TYPE 9PIN MALE SOLDER TYPE	1
		PINS: 30u GOLD PLATED OVER NICKEL	
		INSULATOR: BLUE COLOR P.B.T UL 94V-0 RATED	
		SHELL: STEEL WITH GOLD FLASH	
3	TYPE CF	USB TYPE C FEMALE SOLDER TYPE,RESISTOR(56KΩ) 	1
		PINS: 30u GOLD PLATED OVER NICKEL	
		INSULATOR: BLACK COLOR P.B.T UL 94V-0 RATED	
		SHELL: STEEL WITH GOLD FLASH	
4	inner Mold	HENKEL: A2035 94A	AR
5	Over Mold	BLACK PVC 45P	AR
6	Copper foil	Copper foil	AR

GTC
DOC.CENTER.ISSUE
NOV.16.2023
ONLY FOR
RELEASE

TITLE USB 3.0 A MALE STRAIGHT ANGLE TO USB TYPE C FEMALE STRAIGHT ANGLE					DRAWING NUMBER RR-ASCF-XXGRC			REV. A3	
	B	1:1	Lucas 11/11/16	Ray 11/11/16	Ray 11/11/16	X.X ± 0.5 X.XX ± 0.2	X.XXX ± 0.05 ANGLES ± 1°	mm	2/3
THIRD ANGLE PROJECTION	SIZE	SCALE	DRAW / DATE	CHECK / DATE	APPROVE / DATE	TOLERANCES		UNIT	SHEET


USB FIREWIRE.com

THE INFORMATION CONTAINED HEREIN IS PROPRIETARY AND CONFIDENTIAL TO RR BUSINESS VENTURES, LLC. THE POSSESSOR AGREES TO THE FOLLOWING
1. MAINTAIN THIS DOCUMENT IN CONFIDENCE
2. NOT TO REPRODUCE OR COPY IT
3. NOT TO REVEAL OR PUBLISH IT IN WHOLE OR PART

1

2

3

4

1

2

3

4

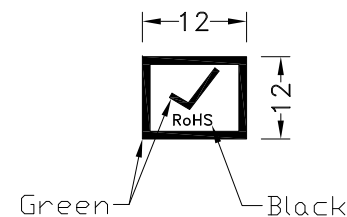
REV	ECN#	DESCRIPTION OF REVISION	DRAW BY DATE	CHECK BY DATE	APPROVE BY DATE
A3	ECN-231106	RR-ASCF-XXG => RR-ASCF-XXGRC	Lucas 11/15/23	Lucas 11/15/23	Ray 11/15/23

P/N	LENGTH(mm)	PE BAG(Inch)	PACKAGE
RR-ASCF-05GRC	127 ⁺²⁰ ₋₀	5.5"*10	(1)
RR-ASCF-06GRC	153 ⁺²⁰ ₋₀	5.5"*10	(1)
RR-ASCF-10GRC	255 ⁺²⁰ ₋₀	5.5"*10	(2)
RR-ASCF-15GRC	381 ⁺³⁰ ₋₀	5.5"*10	(2)
RR-ASCF-25GRC	635 ⁺³⁰ ₋₀	5.5"*10	(2)
RR-ASCF-40GRC	1016 ⁺⁴⁰ ₋₀	5.5"*10	(2)

PE BAG LABEL

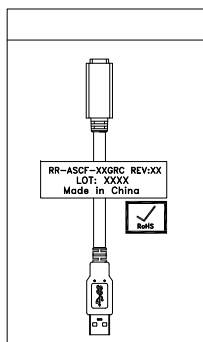


RoHS LABEL

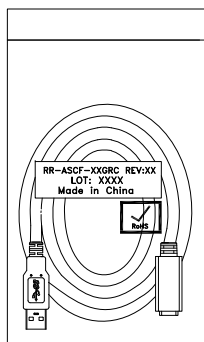


NOTES:PACK EACH CABLE IN A POLY BAG AND 25PCS IN A POLY BAG.

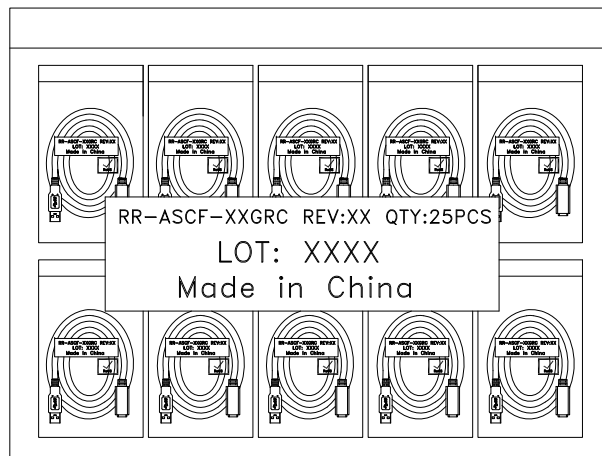
PACK(1)



PACK(2)



GTC
DOC.CENTER.ISSUE
NOV.16.2023
ONLY FOR
RELEASE



TITLE
USB 3.0 A MALE STRAIGHT ANGLE TO USB TYPE C FEMALE STRAIGHT ANGLE

DRAWING NUMBER
RR-ASCF-XXGRC

REV.
A3

THIRD ANGLE PROJECTION	SIZE	SCALE	DRAW / DATE	CHECK / DATE	APPROVE / DATE	TOLERANCES	UNIT	SHEET
	B	1:1	Lucas 11/11/16	Ray 11/11/16	Ray 11/11/16	X.X ± 0.5 X.XX ± 0.2	mm	3/3
						X.XXX ± 0.05 ANGLES ± 1°		

THE INFORMATION CONTAINED HEREIN IS PROPRIETARY AND CONFIDENTIAL TO RR BUSINESS VENTURES, LLC. THE POSSESSOR AGREES TO THE FOLLOWING

1. MAINTAIN THIS DOCUMENT IN CONFIDENCE
2. NOT TO REPRODUCE OR COPY IT
3. NOT TO REVEAL OR PUBLISH IT IN WHOLE OR PART

1

2

3

4